

OUR MAPPING PROCESS

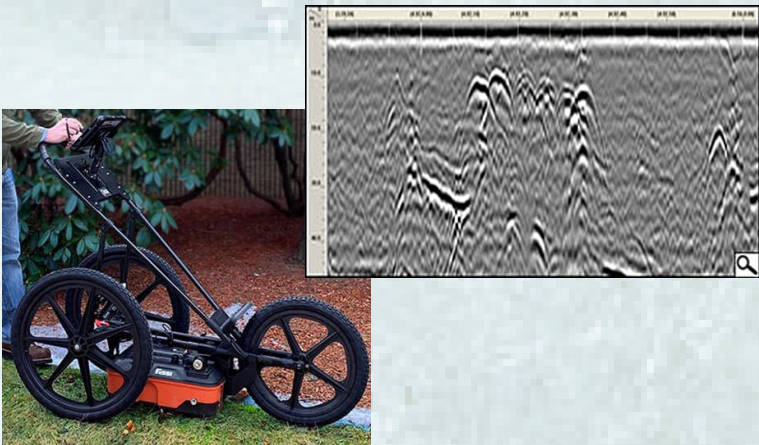
WE USE THE LATEST TECHNOLOGIES IN GROUND PENETRATING RADAR, GPS DATA COLLECTORS, AND GIS PLATFORMS TO CREATE PRECISE MAPS OF CEMETERY ACREAGE.

WE ARE UNIQUELY STRUCTURED TO PROVIDE CEMETERY MAPPING SERVICES ACROSS THE CONTINENTAL UNITED STATES. WE DON'T JUST GATHER DATA FROM AFAR . . .

WE COME TO YOU !

STEP 01

GROUND PENETRATING RADAR



FIELD DATA COLLECTION

GPR SCANNING WILL BE DONE BY A CERTIFIED GPR SITE SUPERVISOR IN APPLICABLE AREAS OF THE CEMETERY, INCLUDING INSIDE COPING, TO VERIFY MARKED BURIALS, DISCOVER UNMARKED BURIALS, AND LOCATE RELEVANT SUBSURFACE FEATURES.

GPS DATA WILL BE COLLECTED OF SURFACE LANDMARKS (INCLUDING BURIAL MARKERS, SLABS, COPING, FENCING, PATHWAYS, ETC.), UNMARKED BURIALS, AND RELEVANT SUBSURFACE FEATURES.

DIGITAL PICTURES (JPG) OF EACH BURIAL MONUMENT AND CEMETERY FEATURE WILL BE COLLECTED

GPS DATA & DIGITAL PHOTO COLLECTION



STEP 02

GIS POST PROCESSING

GPS DATA AND GRAVESTONE IMAGE FILES WILL BE UTILIZED TO POPULATE THE DYNAMIC WEBMAP ON THE ESRI ARCGIS PLATFORM.

THE WEBMAP WILL BE ENABLED WITH ROBUST SEARCH CAPABILITY BY INCORPORATING LEGIBLE GRAVESTONE INSCRIPTIONS INTO THE ATTRIBUTE INFORMATION FOR EACH INTERRED INDIVIDUAL.

EXISTING RECORDS ARE REVIEWED AND RELEVANT INFORMATION IS INCORPORATED INTO THE MAP GEODATABASE.

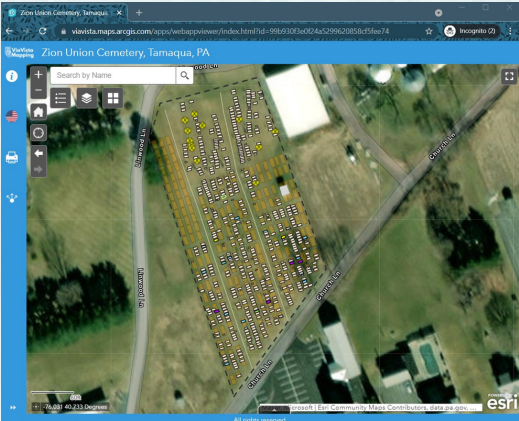
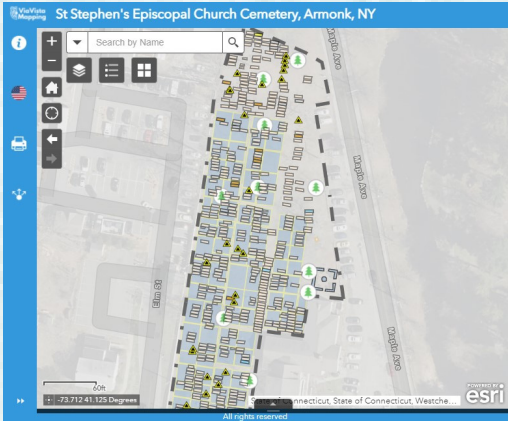
SATELLITE IMAGERY IS USED TO VALIDATE AND ENHANCE THE VISUAL MAP ELEMENTS.

STEP 03

DELIVERABLES TO CLIENT

THE FINISHED WEBMAP WILL BE MADE AVAILABLE TO THE CLIENT VIA URL/ONLINE ACCESS AND WILL BE ACCESSIBLE FROM ANY DEVICE THAT HAS INTERNET ACCESS.

IN ADDITION, LARGE-FORMAT ARCHITECTURAL SIZE MAPS WILL BE CREATED AND PROVIDED TO THE CLIENT VIA PDF FILES.



VIAVISTAMAPPING.COM